

Exploring English and Drama Collections

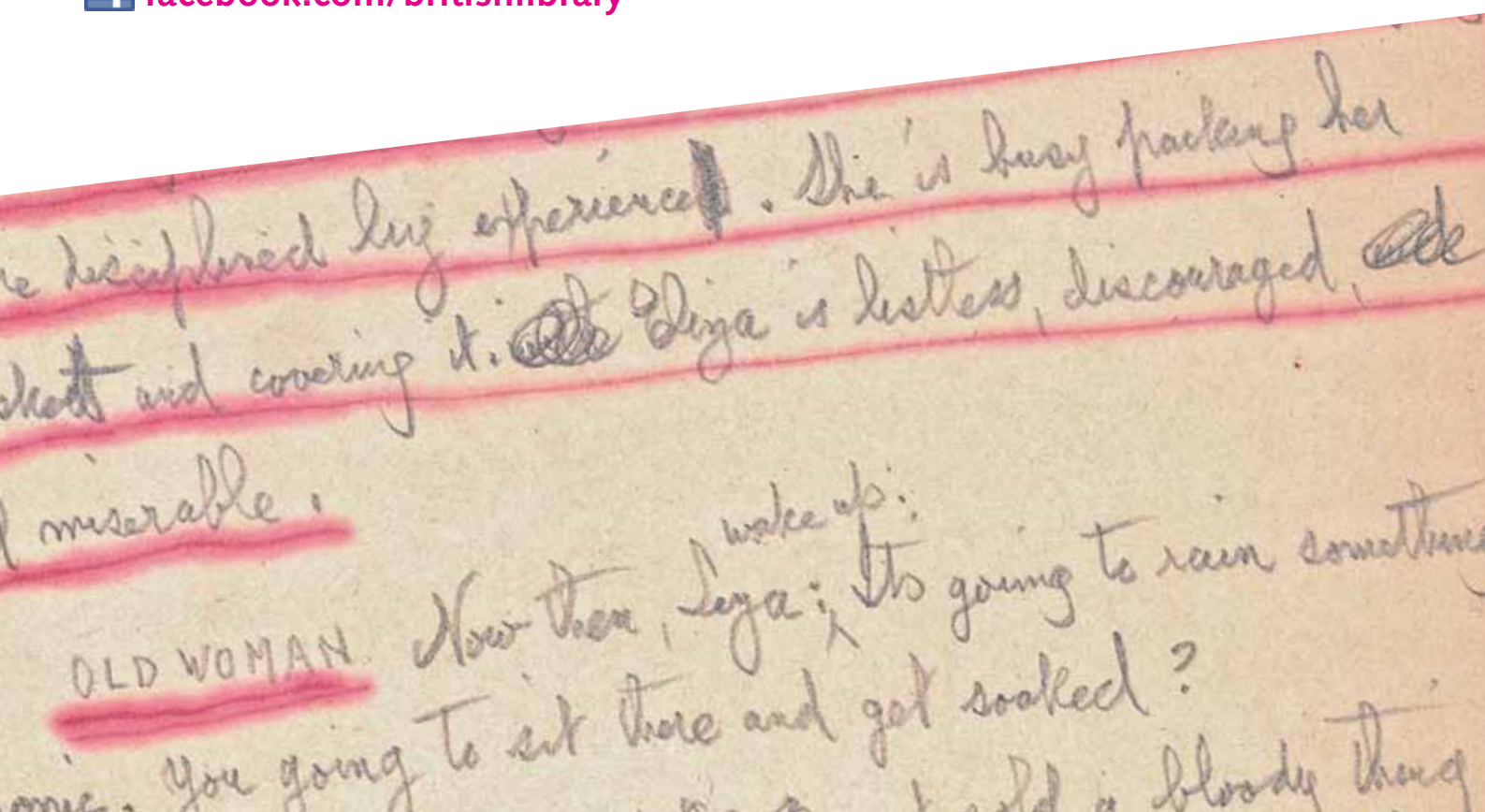
The English and Drama collections at the British Library are unparalleled. From Shakespeare's First Folio to live recordings of experimental theatre, from Charlotte Brontë's love letters to Wendy Cope's emails, you'll find unique, fascinating and unexpected sources for your research. Plus, we have experts on hand to help you find what you need.

To find out more about the Library and explore our collections, visit www.bl.uk

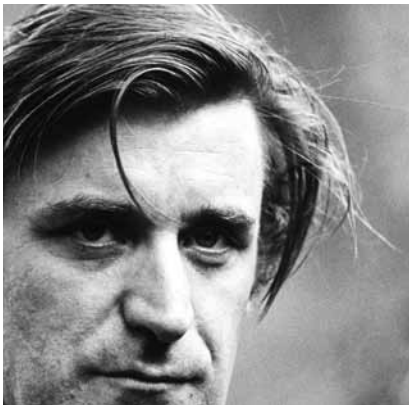
Hear from our English and Drama curators on our blog britishlibrary.typepad.co.uk/english-and-drama/

 [@BLEnglish_Drama](https://twitter.com/BLEnglish_Drama)

 facebook.com/britishlibrary



...the disappointed by experience. She is busy packing her
...and covering it. ~~She~~ Diza is listless, discouraged, ~~and~~
...miserable.
OLD WOMAN. Now then, ^{wake up:} Diza; It's going to rain something
... You going to sit there and get soaked?
... a bloody thing



Manuscripts and archives

Our collections include manuscripts and archives relating to major British writers across poetry, prose and drama, on paper, vellum and electronic media. They cover everything from the only known manuscript of *Beowulf* to archives of writers such as Angela Carter and Ted Hughes, theatrical figures such as Laurence Olivier and corporate archives including publishing houses and literary agents. The plays in the Lord Chamberlain's Collection are a vital source for the history of British theatre between 1737 and 1968.

Find it

Use our specialist archives and manuscripts catalogue searcharchives.bl.uk



Printed works

As the national library we receive a copy of nearly every book produced in the UK so if it's been published we should have it: both literary texts and critical studies. Our collections are ideal if you're looking for out-of-print works; want to compare different editions of a text, or look at works in translation. Part of what sets the Library apart are special collections such as the Ashley Collection of 16th–20th century literature and the Barry Ono Collection of penny dreadfuls, both of which contain invaluable and unique literary texts.

Find it

Use 'Explore the British Library' to search across the Library's collections explore.bl.uk



Sound and moving image

The Library's extensive sound and moving image collections include live recordings of theatre, poetry and prose, plus broadcast radio and TV programmes, and commercially issued products. Live theatre recordings include Royal Shakespeare Company, Royal Court Theatre and National Theatre productions, as well as video documentation of contemporary experimental theatre. The Library is the point of access for the BBC's radio archive, which includes many historic radio dramas, literary documentaries and interviews with writers.

Find it

Use the Sound and Moving Image catalogue cadensa.bl.uk
You can listen to 50,000 sounds from our collections at www.bl.uk/sounds

Theses

With the EThOS service you can download the full text of over 50,000 PhD theses for free, including many related to literature, and view abstracts for thousands more. You can also order a digital copy of a paper thesis or contact the awarding institution to find out how to view the item.

Find it

Start searching EThOS now at ethos.bl.uk

E-resources

A wide range of e-resources can be accessed from computers in our Reading Rooms, from vast databases such as Literature Online to focused titles such as 'Scottish Women Poets of the Romantic Period'. The resources include scholarly journals, electronic manuscripts, newspapers, biographies, dictionaries.

Find it

Look through our list of e-resources at www.bl.uk/eresources/main.shtml

Getting started

How to use the Library

- Visit our website: there are thousands of digitised items including manuscripts, sounds and newspapers.
- Get a free Reader Pass and use our Reading Rooms in London.
- Order journal articles through our Document Supply service.
- Contact our experts; just search online for 'Ask the reference team'.

Getting a Reader Pass

- 1 Pre-register online; you can also order items to view on your first visit.
- 2 Come to our Reader Registration office in St Pancras.
- 3 Bring two types of ID, one with your signature and one with your address.
- 4 Bring a list of items you want to see, plus your student card.
- 5 Get your pass – now you can access any of our Reading Rooms.